

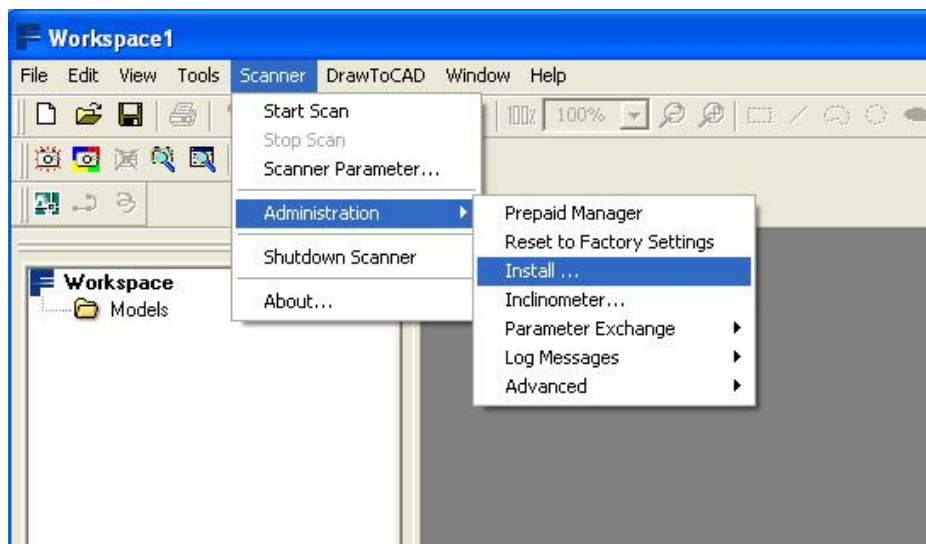


Laser Scanner

Installation of the Nikon D300 Camera

This manual describes how to install the Nikon D300 Camera on your FARO Laser Scanner.

- 1) Extract the "E721_Nikon_D300_Installation" Zip file and save the "E721_Nikon_D300_Installation.iQsetup" file onto the local hard drive of your notebook.
- 2) Start the scanner as normal.
- 3) Before connecting the D300 to your scanner please make sure that the USB protocol of the camera is set to "MTP/PTP".
- 4) Turn OFF the camera and connect it to one of the USB ports of your scanner.
- 5) Use FARO Scene or FARO Record to connect to the scanner as normal.
- 6) Turn the camera ON.
- 7) In FARO Scene / Record go to
"Scanner" – "Administration" – "Install ..."



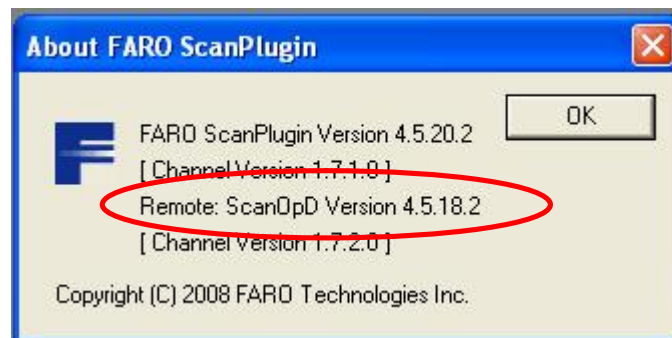
- 8) In the upcoming dialog select the D300 installation file "E721_Nikon_D300_Installation.iQsetup". Press "Open".



- 9) Wait two minutes then restart your scanner.

Please repeat these steps for each Nikon D300 camera (if you want to use more than one D300 camera with your scanner). This installation procedure only has to be done once for each D300.

Please note that you need the scanner firmware ("ScanOpD") version 4.5.18.2 or above to use your scanner together with the D300. To check the "ScanOpD" version of your scanner please connect to your scanner with FARO Scene or FARO Record, then go to "Scanner" – "About".



If the ScanOpD version of your scanner is below 4.5.18.2 or if you have ScanOpD version 4.5.18.2 or above but the installation of the D300 does not work properly please contact the FARO Customer Service.